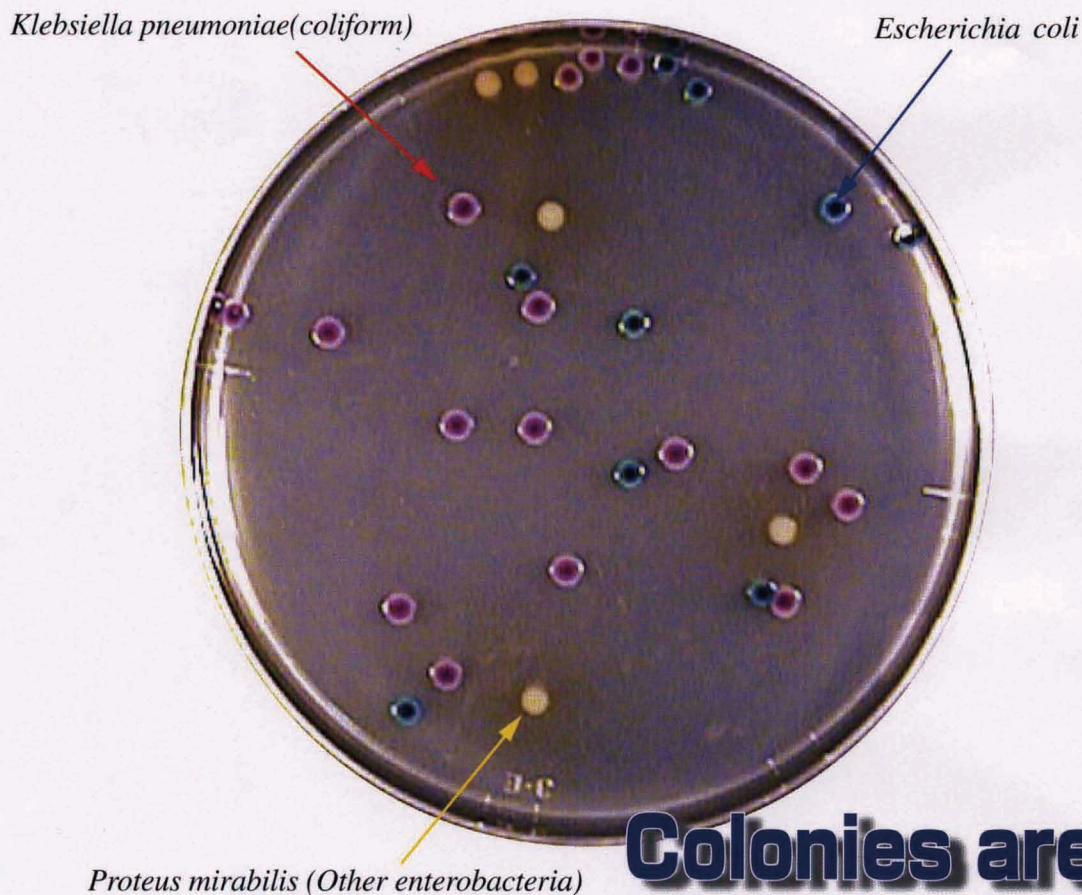


Medium with an enzyme substrate for simultaneous inspection of coliform bacilli and *E. coli* Sodium Dodecyl Sulfate Magenta-GAL • X-GLUC Agar

Listed In Japanese Food Sanitation Inspection Guidelines, Supplement II



Colonies are distinctly colored

Coliform and *E. coli* are colored on a red and blue transparent agar, respectively, thus allowing for easy identification.

E. coli positive

β -glucuronidase is a specific enzyme found only in *E. coli* among enterobacteria, except for *Salmonella* and *Shigella*. It is present in 95% of all *E. coli*. β -glucuronidase hydrolyzes the coloring enzyme-substrate complex X-GLUC, creating blue-to-purplish colonies.

Coliform positive

β -galactosidase produced by coliform hydrolyzes the coloring enzyme-substrate complex MAGENTA-GAL, creating red-to-purplish colonies.

Precaution

All gram-negative enterobacteria, except for coliform, form white colonies. This agar uses sodium dodecyl sulfate as a gram-positive bacterial inhibitor. Not all of the enterobacteria are fostered.

- ★ After Use, sterilize the agar before disposal.
- ★ Specifications are subject to change without notice, for remodeling or quality enhancement.

Product Name	Pro-media AGAR TRICOLOR	
Code No.	XMA-01	XMA-500
Volume	157g (7.85g/pouch X20)	500g/bottle
Recipe	Sodium Dodecyl Sulfate Magenta-GAL, X-GLUC, Others	
Instruction for use :	Dissolve 1bag (7.85g) in 200ml of purified water under heat or perform autoclave sterilization.	
Sake Culture :	Dispense and dilute a medium in a Petri dish filled with a specimen at 50°C or below.	
Smear culture :	Drop a specimen on the surface of a medium dispensed and gelled to leave a uniform coat of smears.	
Cultivate :	Carry out for 18 to 24 hours at 35~37°C	

ELMEX Limited

2-2 Ichigayasadohara-cho, Shinjuku-ku, Tokyo 162-0842 JAPAN
TEL : 081 - 3 - 5229 - 7911 FAX : 081 - 3 - 5261 - 4130
URL: //www.elmex.co.jp e-mail address: sales@elmex.co.jp