

Colony counter Image analyzer **iSAC**

High Performance High Resolution

Offering ability to count colonies with compact size.

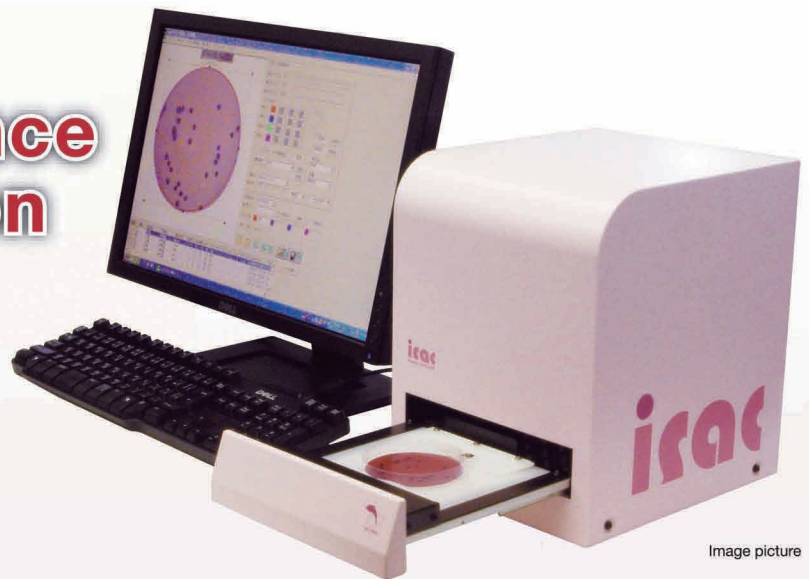
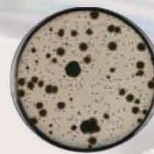
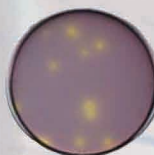
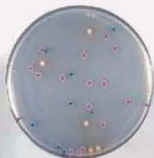


Image picture



High performance

- ◆ Petri-dish, Petri-dish by spiral plating method and sheet type dried media are available.
- ◆ Spread colonies are counted after proportional distribution calibration.
- ◆ Two kinds of enzyme substrate in a media are counted each color simultaneously.
- ◆ The scan speed of $\phi 90$ petri-dish performs within 1.0 second by high definition.

Shading structure & High resolution

- ◆ Two lighting-sources are available for penetrant media and un-penetrant media or sheet type media.
- ◆ The high stability lighting takes high-resolution, which is equal with photography with 3,000,000 pixels of digital cameras.
- ◆ Shading structure avoids the lighting from outside during your count.

Easy connection & Compact

- ◆ Compact size spends a small space.
- ◆ Compatible with a notebook PC.
- ◆ Easy connectable to an USB2.0 port by a single cable.
- ◆ No power supply cable is needed. Lightings interface is supplied through USB of PC.

Easy to operate

- ◆ Place the object to be counted such as a petri dish onto the guide tray, and push to close. (see above picture)
- ◆ Counted result are automatically displayed on the PC screen (see above PC display)
- ◆ Data and pictures are saved automatically by pressing the SAVE button, and available for your report.
- ◆ Available language is in Japanese only.

Product name	Image analyzer iSACIV	Size and Weight	W242×D293×H315mm, 10kg
Code No.	C001-4	Reading sensor	CMOS color camera
Software	iSACIV color analysis software	Light source	Reflection, Transparency
Recommended PC specification	OS : Windows XP (SP2), (SP3)	Reading resolution	Over 2,000,000pixel
	CPU : Pentium4 over 1.7GHz	Scan speed	Less than 1.0 sec.
	Memory : over 512MB	Connect interface	USB2.0
	Interface : USB2.0 port	Maximum reading dimensions	102×102mm
	* USB2 host controller of pure Intel.	Object available	Petri dish including by the spiral plating method and Sheet type dried media
	* ICH4, ICH5, ICH6 South bridge		
Software : EXCEL and printer output drive			

◎ It may be unreadable in case of the colonies which is connecting, or pilling, or the same color as the agar color, or molds.
◎ Specifications are subject to be changed for enhancement, with out notice.

Manufacturer **ELMEX Limited**

2-2 Ichigayasadohara-cho, Shinjuku-ku, Tokyo 162-0842 JAPAN
TEL : 081- 3 - 5229 - 7911 FAX : 081- 3 - 5261- 4130
URL : <http://www.elmex.co.jp> e-mail address : sales@elmex.co.jp