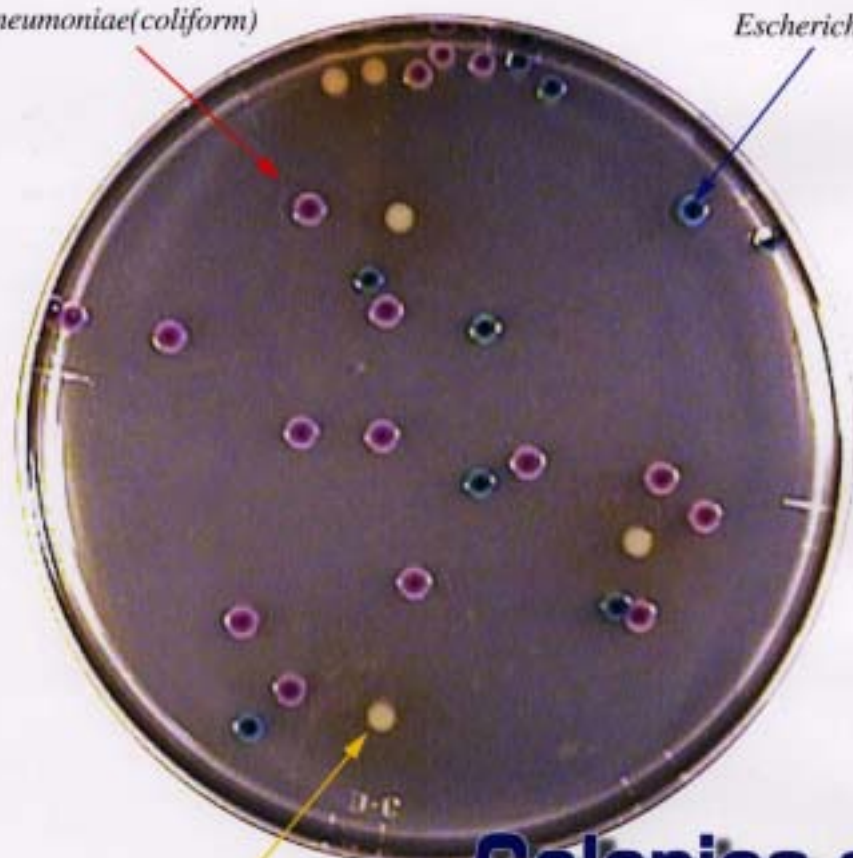


# Medium with an oxygen substrate for simultaneous inspection of coliform bacilli and *E. coli* **Sodium Dodecyl Sulfate Magenta-GAL • X-GLUC Agar**

Listed In Japanese Food Sanitation Inspection Guidelines, Supplement II

*Klebsiella pneumoniae*(coliform)

*Escherichia* (coliform)



*Proteus mirabilis* (Other enterobacteria)

## Colonies are distinctly colored

### **E. coli positive**

$\beta$ -glucuronidase is a specific enzyme found only in *E. coli* among enterobacteria, except for *Salmonella* and *Shigella*. It is present in 95% of all *E. coli*.  $\beta$ -glucuronidase hydrolyzes the coloring enzyme-substrate complex X-GLUC, creating blue-to-purplish colonies.

### **Coliform positive**

$\beta$ -galactosidase produced by coliform hydrolyzes the coloring enzyme-substrate complex MAGENTA-GAL, creating red-to-purplish colonies.

### **Precaution**

All gram-negative enterobacteria, except for coliform, form white colonies. This agar uses sodium dodecyl sulfate as a gram-positive bacterial inhibitor. Not all of the enterobacteria are fostered.

- ★ After Use, sterilize the agar before disposal.
- ★ Specifications are subject to change without notice, for remodeling or quality enhancement.

Coliform and *E. coli* are colored on a red and blue transparent agar, respectively, thus allowing for easy identification.

Product Name	Pro-media AGAR TRICOLOR	
Code No.	XMA-01	XMA-500
Volume	157g (7.85g/pouch X20)	500g/bottle
Recipe	Sodium Dodecyl Sulfate Magenta-GAL, X-GLUC, Others	
Instruction for use	Dissolve 1 bag (7.85g) in 200ml of purified water under heat or perform autoclave sterilization.	
Sake Culture	Dispense and dilute a medium in a Petri dish filled with a specimen at 50°C or below.	
Smear culture	Drop a specimen on the surface of a medium dispensed and gelled to leave a uniform coat of smears.	
Cultivate	Carry out for 18 to 24 hours at 35~37°C	

## ELMEX Limited

2-2 Ichigayasadahara-cho, Shinjuku-ku, Tokyo 162-0842 JAPAN  
TEL: 081-3-5229-7911 FAX: 081-3-5261-4130  
URL://www.elmex.co.jp e-mail address: info@elmex.co.jp